

MEMC1a Upgrade

Warning:

This upgrade must be performed by an Acorn Approved Service Centre in order not to void the warranty on the computer.

The MEMC1a upgrade may be fitted to computers with model numbers A310 and A440 which have not already been upgraded. A410/1, R140 and A3000 computers DO NOT NEED THIS UPGRADE. This is a necessary upgrade before fitting Acorn SCSI, Floating Point expansion cards and Aleph One ARM3 upgrades.

To fit the upgrade you will need:

a 68 pin PLCC chip extractor tool (substitutes are not acceptable).

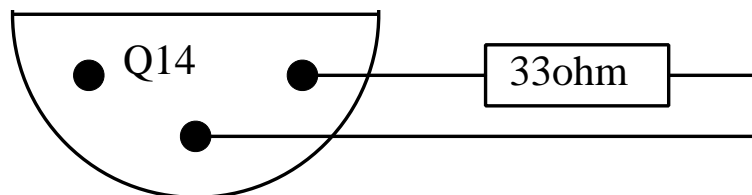
a MEMC1a chip (included in kit)

a pre-programmed PAL chip (included in kit)

a 33 ohm resistor (included in kit)

Fitting the upgrade

1. Disconnect the power from the computer and remove the top cover, remove all expansion cards and leads from the machine and remove the main PCB in accordance with the service manual.
2. ON A440 ONLY using a pair of side-cutters remove transistor Q14 from the board and then remove the three stubs of its legs from the board. Form the resistor and then solder it into the two holes as indicated. Remove R121, located just behind the disc drive connector from the main card.



3. Remove the MEMC from its socket using the extractor tool, noting its orientation. Put it to one side and insert the new MEMC1a from the kit, ensuring that its orientation is the same as before. Push it home with your thumb until it is flush within the socket.
4. Remove the existing PAL with a screwdriver or DIP chip extractor and replace it with the one from the kit, again ensuring that it is correctly orientated.
5. Reassemble the computer and test.