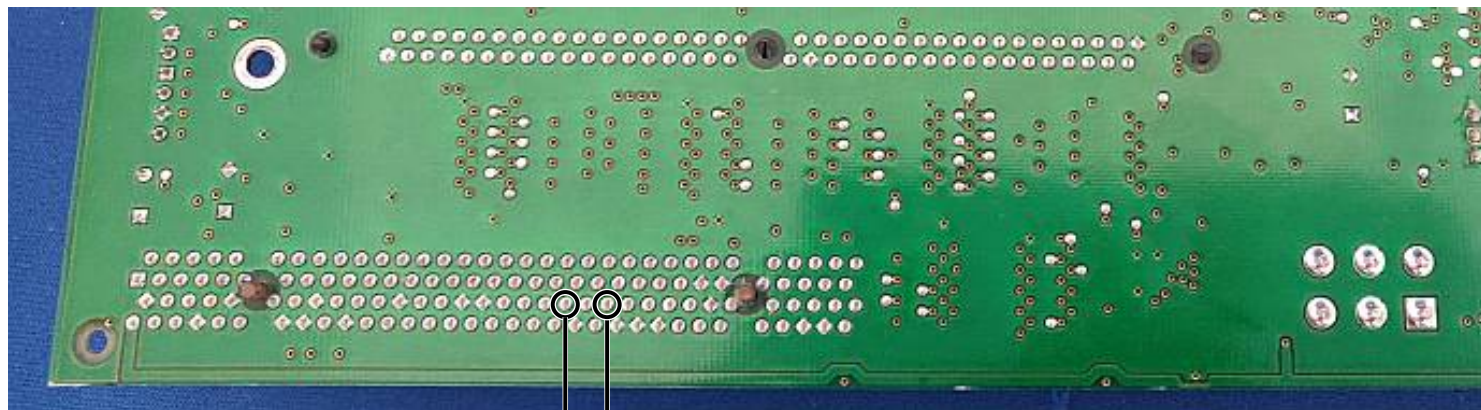


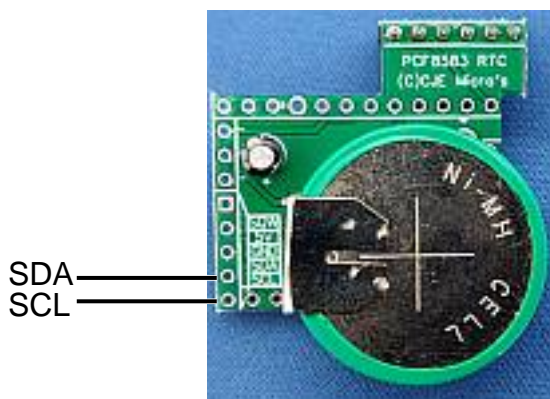
Replacement RTC & CMOS RAM module for Risc PC, 'POST' mounting

The RTC Module fits onto the POST header, which is just to the right hand side of the front processor socket on the RiscPC motherboard (when looking from the front of the computer). Flying leads from the RTC Module can then be taken either around the edge of the motherboard or through a mounting hole, to the rear of the board. They should then be soldered to the SCL and SDA pins on the underside of the backplane connector as shown below. Take care to solder the lead from the SCL pad on the RTC to the SCL pin on the backplane, and similarly for the SDA lead. As the pins on the backplane connector are very close together, care must be taken not to bridge any pins with the wire or solder.



SCL | SDA

Location of the SCL and SDA pins on the underside of the backplane socket



The SCL and SDA pads on the RTC Module



Location of the RTC Module on the motherboard, to the right of the Processor sockets.

Once the RTC Module is fitted, you will also need to remove the existing RTC chip from the motherboard by snipping the legs with fine wire cutters and lifting the chip off the board. This prevents any interaction between the new RTC chip and the old one.

24th April 2019